



Rabbit anti IκBa (Paired S32/36) (NFKB1A) Polyclonal Antibody

Alternative Name(s): NFKBI, nuclear factor of kappa light polypeptide gene enhancer in B-cells inhibitor, alpha

Order Information

- **Description:** IκBa (Paired S32/36) (NFKB1A)
- **Catalogue:** 602-230
- **Lot:** See label
- **Size:** 100ug/200ul
- **Host:** Rabbit
- **Clone:** nan
- **Application:** IHC(P), WB
- **Reactivity:** Hu, Ms, Rt

ANTIGEN PREPARATION

A synthetic peptide corresponding to the epitope –DSGLDSM- without the dual phosphorylation sites serine 32 and serine 36 of human IκBα protein. This sequence is identical within human, mouse, rat, dog and bovine.

BACKGROUND

There are six members in the IκB family, in which IκBa is first protein induced by NF-κB activation. NF-κB is silenced in the cytoplasm by an inhibitory protein, IκB. Synthesis of IκBa is autoregulated. IκB proteins are phosphorylated by IκB kinase complex consisting of at least three proteins, IKK1/a, IKK2/b, and IKK3/g. External stimuli such as TNF or other cytokines initiates a signal transduction cascade that leads to the activation of IκB-kinase complex that specifically phosphorylates IκBa on Serine-32 and Serine-36. Phosphorylation of these sites leads to ubiquitination of IκBa and subsequent degradation by the 26 S proteasome.

PURIFICATION

The Rabbit IgG is purified by Epitope Affinity Purification

FORMULATION

This affinity purified antibody is supplied in sterile Phosphatebuffered saline (pH7.2) containing antibody stabilizer

SPECIFICITY

This antibody recognizes ~42 kDa of human IκBa without phosphorylation sites of Ser32/Ser36. It does not recognize phosphorylated peptides confirmed by dot blot. This antibody also reacts with rat and mouse. The other species are not tested.

STORAGE

The antibodies are stable for 24 months from date of receipt when stored at –20oC to –70oC. The antibodies can be stored at 2oC-8oC for three month without detectable loss of activity. Avoid repeated freezing-thawing cycles.

APPLICATIONS/SUGGESTED WORKING DILUTIONS*

- Western Blot: 0.1-1 µg/ml
- ELISA: 0.01-0.1 µg/ml
- Immunoprecipitation: 2-5 µg/ml
- IHC: 2-10 µg/ml
- Flow cytometry: Not tested
- Molecular Weight: 160.0
- Positive Control: Kidney Tissue
- Cellular Location: Cell Membrane

*Optimal dilutions should be determined by researchers for the specific applications.

FOR RESEARCH USE ONLY.

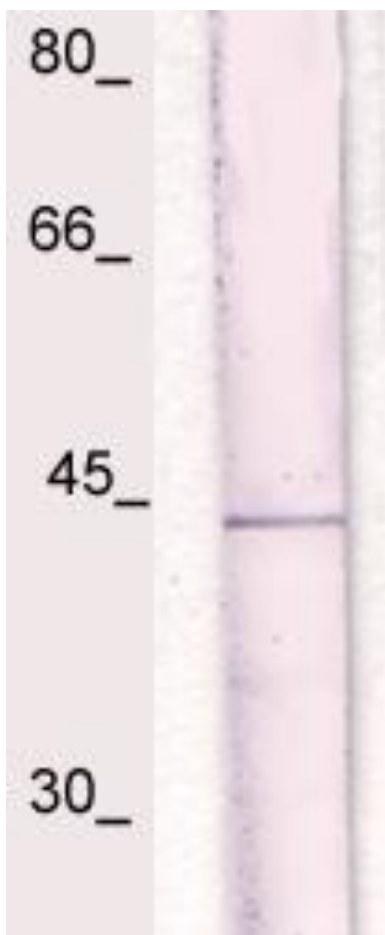
AbboMax, Inc 2528 Qume Drive, Suite 8, San Jose, California 95131, USA
1 408-573-1898 (Tel). 1 408-573-1858 (Fax). www.abbomax.com info@abbomax.com



FOR RESEARCH USE ONLY.

AbboMax, Inc 2528 Qume Drive, Suite 8, San Jose, California 95131, USA
1 408-573-1898 (Tel). 1 408-573-1858 (Fax). www.abbomax.com info@abbomax.com

DATA ATTACHMENTS



Western Blot: The whole cell lysate derived Jurkat was immunoblotted by Rabbit anti-IkBa(Paired S32/S36) (Cat#602-230) at 1:500. An immune-reactive band is observed around ~42kDa.

REFERENCES

FOR RESEARCH USE ONLY.

AbboMax, Inc 2528 Qume Drive, Suite 8, San Jose, California 95131, USA
1 408-573-1898 (Tel). 1 408-573-1858 (Fax). www.abbomax.com info@abbomax.com